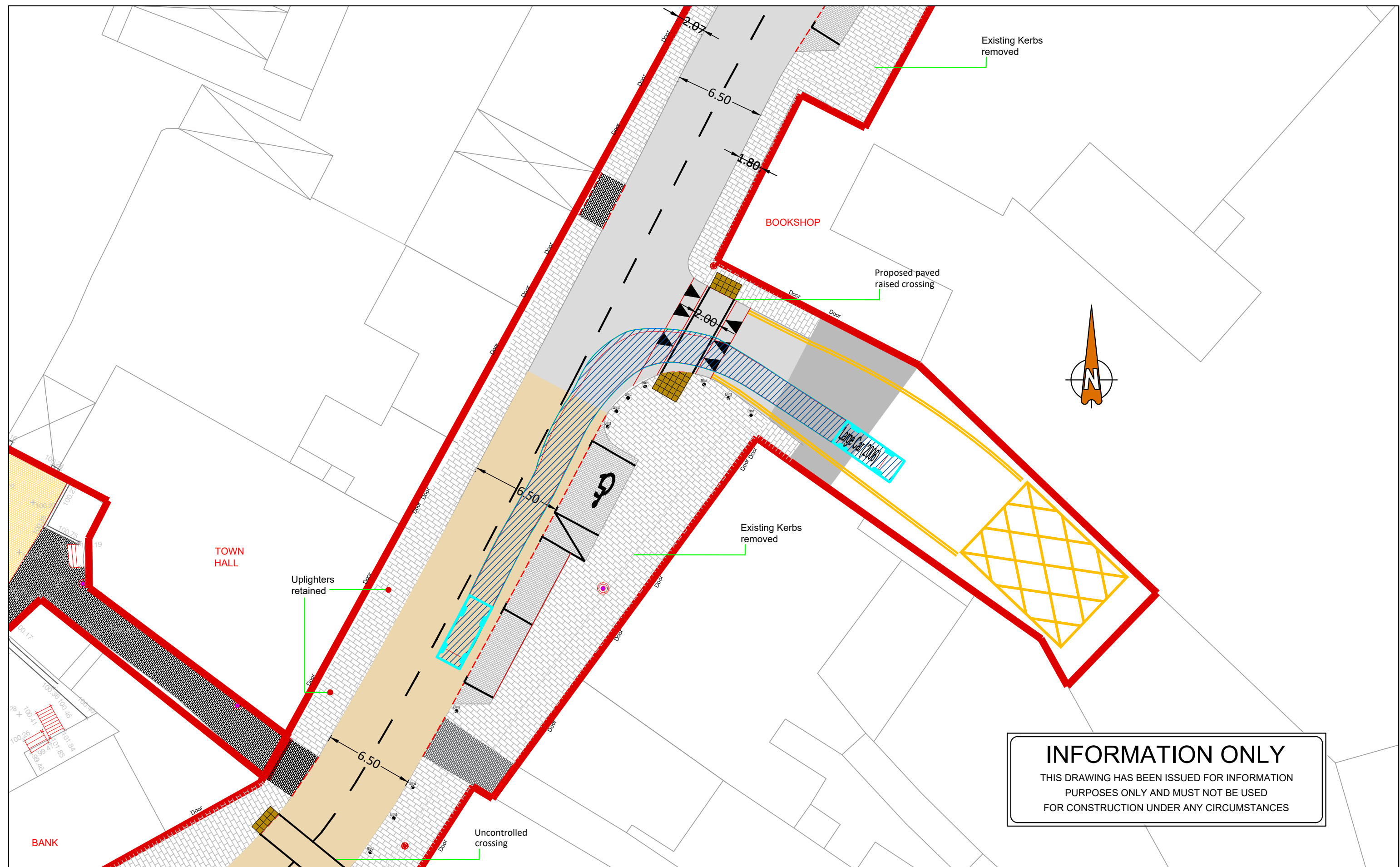


NOTE: WARNING SIGN W042 TRAFFIC SIGNALS PLACED IN ADVANCE OF NEW SIGNALISED CROSSING ACCORDANCE WITH TSM CHAPTER 6

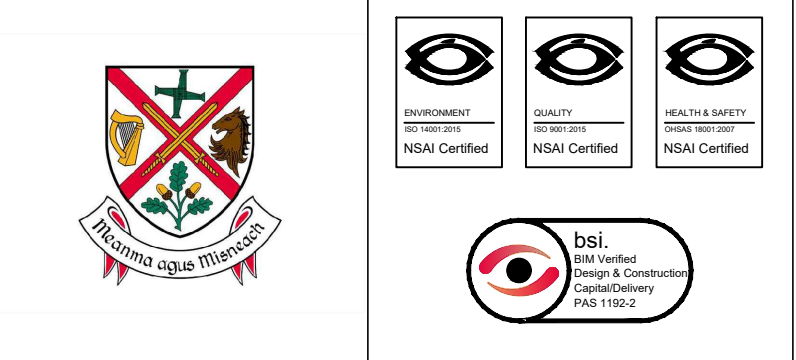


INFORMATION ONLY
THIS DRAWING HAS BEEN ISSUED FOR INFORMATION PURPOSES ONLY AND MUST NOT BE USED FOR CONSTRUCTION UNDER ANY CIRCUMSTANCES

- FOR SETTING OUT REFER TO ARCHITECT'S DRAWINGS.
- THIS DRAWING TO BE READ IN CONJUNCTION WITH ALL OTHER ARCHITECTURAL AND ENGINEERING DRAWINGS AND ALL OTHER RELEVANT DRAWINGS AND SPECIFICATIONS.
- DO NOT SCALE THIS DRAWING. USE FIGURED DIMENSIONS ONLY.
- NO PART OF THIS DOCUMENT MAY BE REPRODUCED OR TRANSMITTED IN ANY FORM OR STORED IN ANY RETRIEVAL SYSTEM OF ANY NATURE WITHOUT THE WRITTEN PERMISSION OF O'CONNOR SUTTON CRONIN AS COPYRIGHT HOLDER EXCEPT AS AGREED FOR USE ON THE PROJECT FOR WHICH THE DOCUMENT WAS ORIGINALLY ISSUED.

Rev No.	Date	Revision Note	Drn by	Chkd by
P01	19.07.21	SUITABLE FOR INFORMATION	SMG	AH
P02	12.01.22	SUITABLE FOR INFORMATION	JC	SMG
P03	17.01.22	SUITABLE FOR INFORMATION	RM	SMG

Rev No.	Date	Revision Note	Drn by	Chkd by



Head Office,
9 Prussia Street,
Dublin 7,
D07 KT57

TEL +353 (0)1 8682000

e: contactus@ocsc.ie
w: www.ocsc.ie

Dublin | London | Belfast | Galway | Cork | Birmingham



Client: THE PAUL HOGARTH COMPANY
Project: KILCULLEN PUBLIC REALM

Title: SWEPETH PATH ANALYSIS

Code	Originator	Zone	Level	Type	Role	Number	Status	Revision
P294	OCSC	XX	XX	DR	C	0140	S2	P03

Date: 12.01.22 Scale: 1:250 @ A1 Drn by:JC Chkd by:SMG Aprvd by:AH